



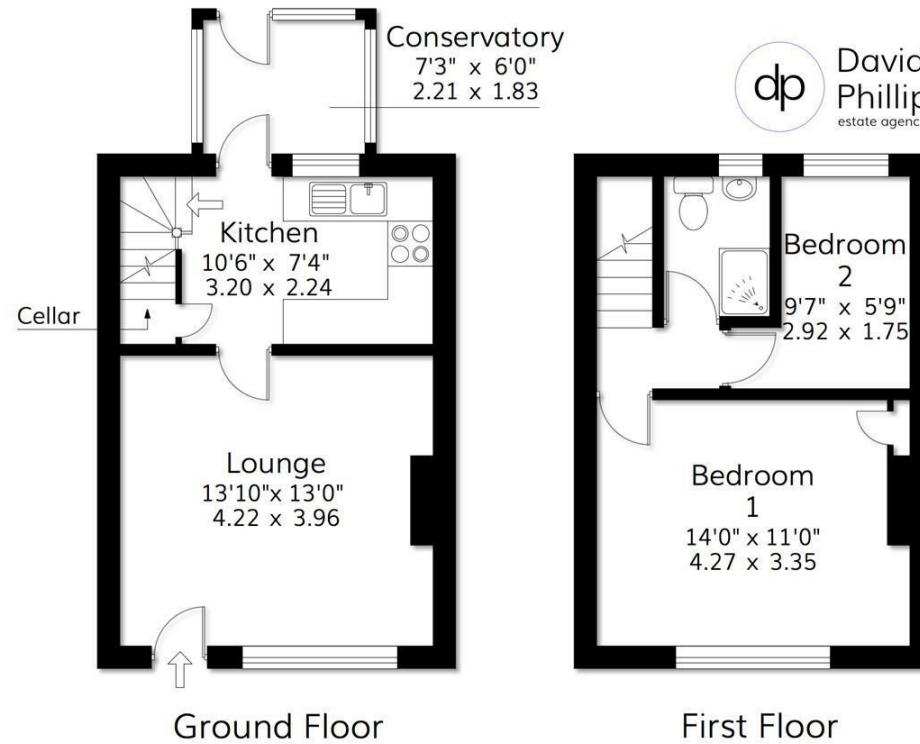
Price Guide £210,000

Description

An attractively presented 2 bedroom stone built terrace house in a great location, with permit parking, convenient for excellent amenities, eateries, bars, shops and Horsforth train station 1.5 miles away.







Approx Gross Floor Area = 639 Sq. Feet
 = 59.26 Sq. Metres
 For illustrative purposes only. Not to scale.

Office Details:

86 Leeds Road
 Bramhope
 Leeds
 West Yorkshire
 LS16 9AN

T: 01134 676 400
 E: info@davidphillip.co.uk

